

March 2nd, 2022

Adaptive Industrialization Tailored to Local Content

Elizabeth Wibling

BD Manager, Northern Europe & UK | FOW BU

elizabeth.wibling@technipenergies.com



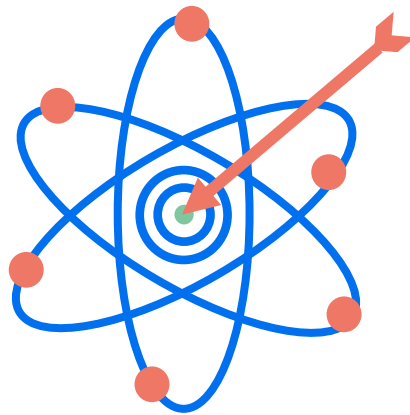
Industrialization - What Do We Deliver?

Local Content & regulation

CO₂ Footprint Consideration

Serial & Mass Production

Standardized & Consistent Product



Cost Effective Solution

Robust & Flexible Execution Plan

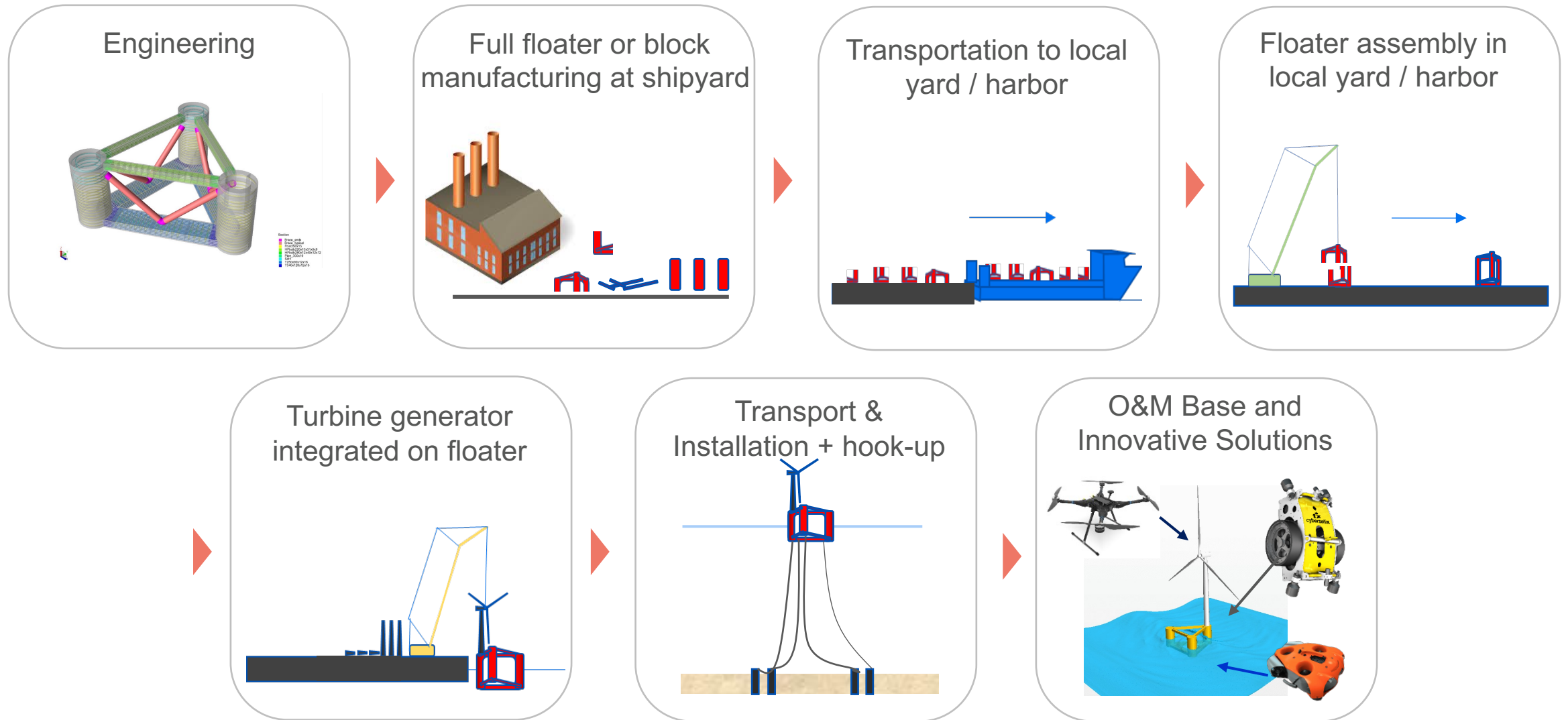
Global Application



INO12™
by.TEN

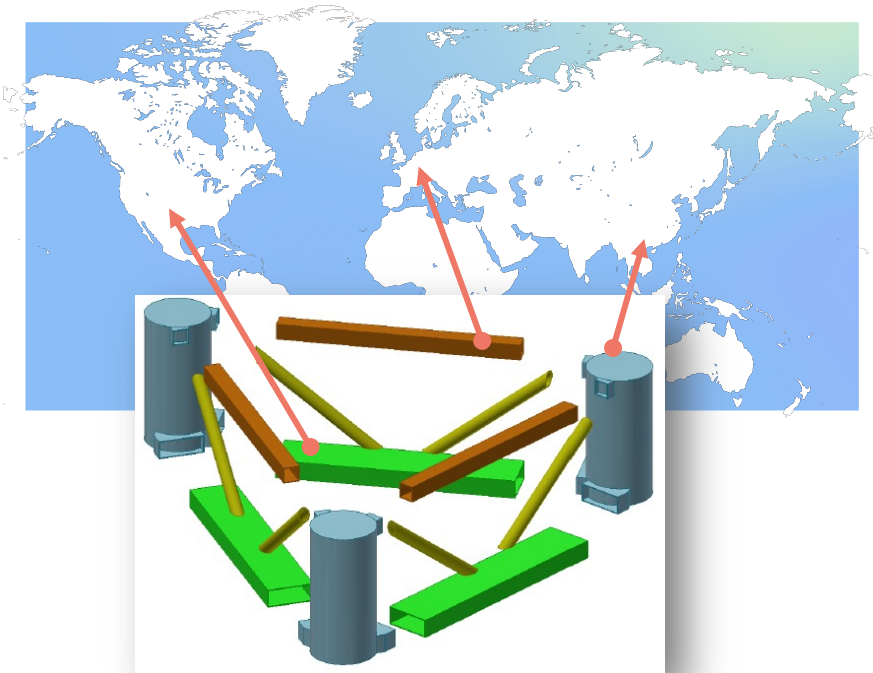
INO15™
by.TEN

Robust and Flexible Execution Plan

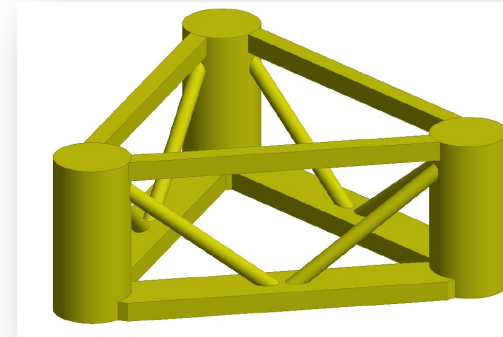


Flexibility through Modularization Approach

Multi-source Block Fabrication

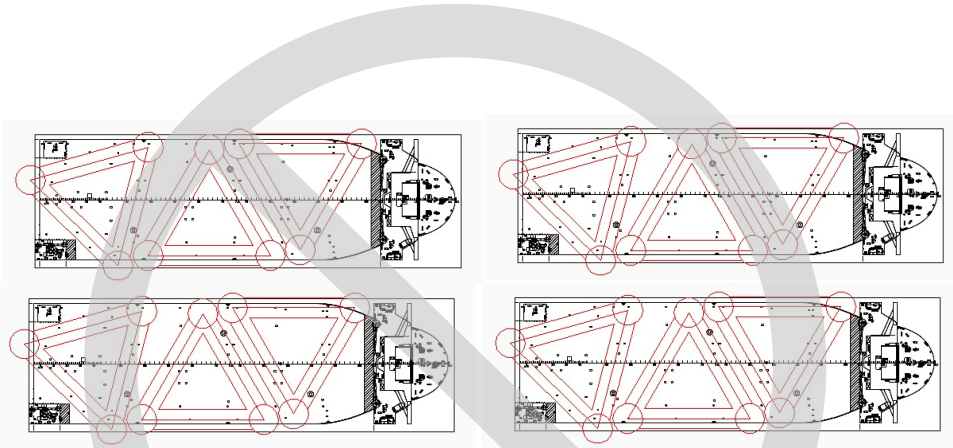


Local Assembly and Turbine Integration

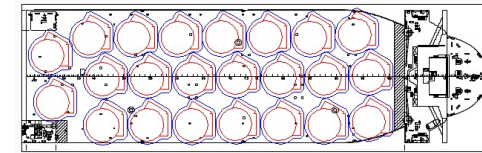
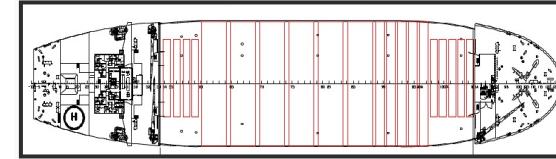


➤ Increased Local Content

Optimized Transportation



**Fully Assembled
Foundation Transport**



Cluster Block Transport

- **Efficient**
- **Lower Cost**
- **Lower Carbon Footprint**

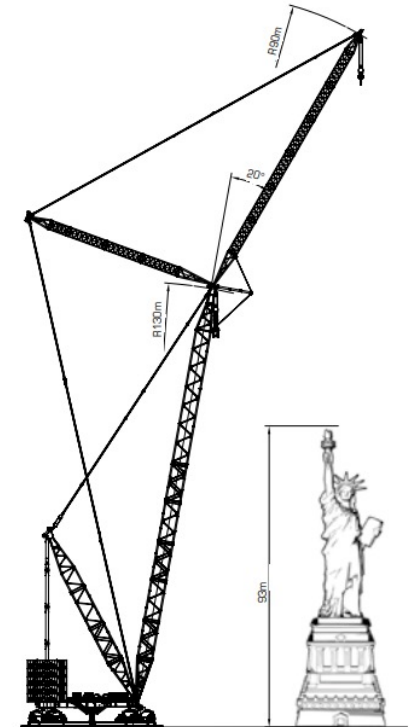
Turbine Integration Considerations

➤ Challenge

- **Heavy Cranage for integration of WTG**
15MW: +800t nacelle, +140m heights
- **Mobilization of Heavy Lift Crane**
12-18months, high cost
- **Ground Bearing Capacity**
+20t/m² for lifting
- **Quay Space Limitations**
For storage and handling
- **Water / Air Draft**
Shallow / bridges

➤ Solutions

- **Innovative Products & Block Fabrication**
 - minimize heavy cranes use
 - maximize local yard/harbor scope
- **INO Floater requires minimal draft**



Typical Heavy Lift Crane

Local Content Opportunities - USA

- **Oil & Gas expertise utilized in FOW**
- **Local supply chain**
 - **Local procurement** (WTG components, cables, etc.)
 - **Vessels**
 - **Shipyards/ports/marshalling yards for assembly and integration**
- **Investments** (east coast projects)
- **O&M Hubs** (long-term maintenance contracts)
- **Digital Expertise**



Thank you

Elizabeth Wibling

BD Manager, Northern Europe & UK | FOW BU

elizabeth.wibling@technipenergies.com